

STANDARD CONTAINER DETAILS  
20' GENERAL PURPOSE / DRY VAN



		Millimeters	Feet
Internal Dimensions	Length	5'900	19'4"
	Width	2'350	7'8"
	Height	2'390	7'10"
Door Opening	Width	2'340	7'8"
	Height	2'280	7'6"
		Kilograms	Lbs
Weight	Max. Payload	21'800	48'060
	Container-Tare	2'200	4'850
	Max . Gross Wt.	24'000	52'910
		Cube Meters	Cube Feet
Volume Capacity	Max. Payload	33,2	1173

40' GENERAL PURPOSE / DRY VAN



Suitable for commodities in boxes, cartons, bundles, drums, smaller cases, furniture's, pallets, etc.

		Millimeters	Feet
Internal Dimensions	Length	12'033	39'6"
	Width	2'350	7'8"
	Height	2'390	7'10"
Door Opening	Width	2'340	7'8"
	Height	2'280	7'6"
		Kilograms	Lbs
Weight	Max. Payload	26'680	58'820
	Container-Tare	3'800	8'380
	Max . Gross Wt.	30'480	67'200
		Cube Meters	Cube Feet
Volume Capacity	Max. Payload	67,6	2'387

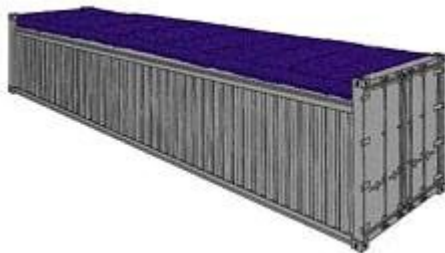
- Internal dimensions and weights are based on shipping line's and manufacturer's specifications. Tolerances must always be taken into account by shipper. Above mentioned details are to be considered as a guideline only.
- Weight restrictions may be considered throughout the whole transport leg. National rules and regulations for road and rail transport, capacity limitations of cranes in seaport and inland-terminals as well as other factors may overrule the possible payload of a container.
- For precise case-by-case information consult your local Freight Forwarder, Packaging Specialist or the specific shipping line you are going to book with.

OPEN TOP CONTAINER DETAILS  
20' OPEN TOP



		Millimetres	Feet
Internal Dimensions	Length	5'895	19'4"
	Width	2'344	7'8"
	Height	2'347	7'8"
Door Opening	Width	2'336	7'8"
	Height	2'160	7'1"
Roof Opening	Width	5'335	17'6"
	Height	1'900	6'2"
		Kilograms	Lbs
Weight	Max. Payload	28'130	62'020
	Container-Tare	2'350	5'180
	Max . Gross Wt.	30'480	67'200
		Cube Metres	Cube Feet
Volume	Max. Payload	31,5	1'112

40' OPEN TOP



For large and/or high pieces that can not be loaded through container doors, such as machineries, marble, glass sheets, etc

		Millimetres	Feet
Internal Dimensions	Length	12'022	39'5"
	Width	2'344	7'8"
	Height	2'347	7'8"
Door Opening	Width	2'336	7'8"
	Height	2'275	7'5"
Roof Opening	Width	11'515	37'9"
	Height	1'880	6'2"
		Kilograms	Lbs
Weight	Max. Payload	26'740	58'955
	Container-Tare	3'740	8'245
	Max . Gross Wt.	30'480	67'200
		Cube Metres	Cube Feet
Volume Capacity	Max. Payload	65,4	2'306

- Internal dimensions and weights are based on shipping line's and manufacturer's specifications. Tolerances must always be taken into account by shipper. Above mentioned details are to be considered as a guideline only.
- Weight restrictions may be considered throughout the whole transport leg. National rules and regulations for road and rail transport, capacity limitations of cranes in seaport and inland-terminals as well as other factors may overrule the possible payload of a container.
- For precise case-by-case information consult your local Freight Forwarder, Packaging Specialist or the specific shipping line you are going to book with.

#### FLAT RACK CONTAINER SPECIFICATION:



FLAT RACK 20'							
inside length	inside width	inside height	door width	door height	capacity	tare weight	maxi cargo
18'5"	7'3"	7'4"	-	-	-	5,578 Lbs	47,333 Lbs
5.620 m	2.200 m	2.233 m	-	-	-	2,530 Kgs	21,470 Kgs

FLAT RACK 40'							
inside length	inside width	inside height	door width	door height	capacity	tare weight	maxi cargo
39'7"	6'10"	6'5"	-	-	-	12,081 Lbs	85,800 Lbs
12.080 m	2.438 m	2.103 m	-	-	-	5,480 Kgs	39,000 Kgs

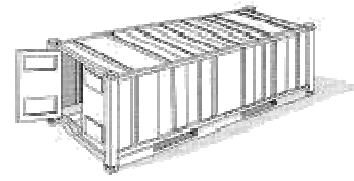
#### FLAT RACK COLLAPSIBLE CONTAINERS



FLAT RACK COLLAPSIBLE 20'							
inside length	inside width	inside height	door width	door height	capacity	tare weight	maxi cargo
18'6"	7'3"	7'4"	-	-	-	6,061 Lbs	61,117 Lbs
5.618 m	2.208 m	2.233 m	-	-	-	2,750 Kgs	27,730 Kgs

FLAT RACK COLLAPSIBLE 40' (STAK BED)							
inside length	inside width	inside height	door width	door height	capacity	tare weight	maxi cargo
39'7"	6'10"	6'5"	-	-	-	12,787 Lbs	85,800 Lbs
12.080 m	2.126 m	2.043 m	-	-	-	5,800 Kgs	39,000 Kgs

## REEFER CONTAINERS



REEFER 20'							
inside length	inside width	inside height	door width	door height	capacity	tare weight	maxi cargo
17'8"	7'5"	7'5"	7'5"	7'3"	1,000 Cft	7,040 Lbs	45,760 Lbs
5.425 m	2.275 m	2.260 m	2.258 m	2.216 m	28.3 Cu.m	3,200 Kgs	20,800 Kgs

REEFER 40'							
inside length	inside width	inside height	door width	door height	capacity	tare weight	maxi cargo
37'8"	7'5"	7'2"	7'5"	7'0"	2,040 Cft	10,780 Lbs	56,276 Lbs
11.493 m	2.270 m	2.197 m	2.282 m	2.155 m	57.8 Cu.m	4,900 Kgs	25,580 Kgs

REEFER 40' HIGH CUBE							
inside length	inside width	inside height	door width	door height	capacity	tare weight	maxi cargo
37'11"	7'6"	8'2"	7'6"	8'0"	2,344 Cft	9,900 Lbs	57,561 Lbs
11.557 m	2.294 m	2.500 m	2.294 m	2.440 m	66.6 Cu.m	4,500 Kgs	25,980 Kgs

## 40' HIGH CUBE GENERAL PURPOSE / DRY VAN



Suitable for commodities in boxes, cartons, bundles, drums, smaller cases, furniture's, pallets, etc.

		Millimeters	Feet
Internal Dimensions	Length	12'033	39'6"
	Width	2'350	7'8"
	Height	2'695	8'10"
Door Opening	Width	2'340	7'8"
	Height	2'585	8'6"
		Kilograms	Lbs
Weight	Max. Payload	26'480	58'360
	Container-Tare	4'000	8'850
	Max . Gross Wt.	30'480	67'200
		Cube Meters	Cube Feet
Volume Capacity	Max. Payload	76,2	2'690

- Internal dimensions and weights are based on shipping line's and manufacturer's specifications. Tolerances must always be

taken into account by shipper. Above mentioned details are to be considered as a guideline only.

- Weight restrictions may be considered throughout the whole transport leg. National rules and regulations for road and rail transport, capacity limitations of cranes in seaport and inland-terminals as well as other factors may overrule the possible payload of a container.
- For precise case-by-case information consult your local Freight Forwarder, Packaging Specialist or the specific shipping line you are going to book with.

## PLATFORM CONTAINERS



PLATFORM 20'							
inside length	inside width	payload height	door width	door height	capacity	tare weight	maxi cargo
19'11"	8'0"	7'4"	-	-	-	6,061 Lbs	52,896 Lbs
6.058 m	2.438 m	2.233 m	-	-	-	2,750 Kgs	24,000 Kgs

PLATFORM 40'							
inside length	inside width	payload height	door width	door height	capacity	tare weight	maxi cargo
40'00"	8'0"	6'5"	-	-	-	12,783 Lbs	86,397 Lbs
12.18 m	2.40 m	1.95 m	-	-	-	5,800 Kgs	39,200 Kgs